





Warm-Up #1

- **Brainstorm** a typical room at school or at your home that contains 10-15 potentially hazardous objects or situations.
- Next, identify (**List**) all the hazards & explain why they are hazardous.

Warm-Up #2 Speeding & unintentional injuries. Fill in the blanks...

- Drivers who take their eyes off the road for nearly _____ seconds during an average text, at 55 MPH... a car can travel the distance of a football field in that time.
- Automobile unintentional injuries account for _____ % of all deaths in your age group (15-24).



WU #3

- **When checking for a pulse...**
 - **a. What is the name of the artery**
 - **b. Location of artery**
 - **c. Which artery do we check for a baby, child and adult (they are different)**

WU #3 ANSWER

- What is the name of the artery
- Location of artery
- Which artery do we check for a baby, child and adult



A stylized illustration at the top of the slide features a bright yellow sun with a small blue circle in the center, partially obscured by light blue, fluffy clouds. The background is a solid blue color with a subtle pattern of lighter blue squares.

WU #4

List “tips for proper chest compressions” ...

How do we do chest compressions differently in a baby, child and adult?

WU #4 Answer



© Healthwise, Incorporated



WU # 5 What is an AED? When should one be used? Why is it important?



WU # 5 ANSWER

What is an AED? Automatic External Defibrillator

When should one be used? In any cardiac emergency

Why is it important? The machine will prompt the lay responder to continue performing CPR or to apply a shock-if needed.

WU # 6

Define Blood pressure-
What are the two readings
and what do they measure?

Blood Pressure Categories



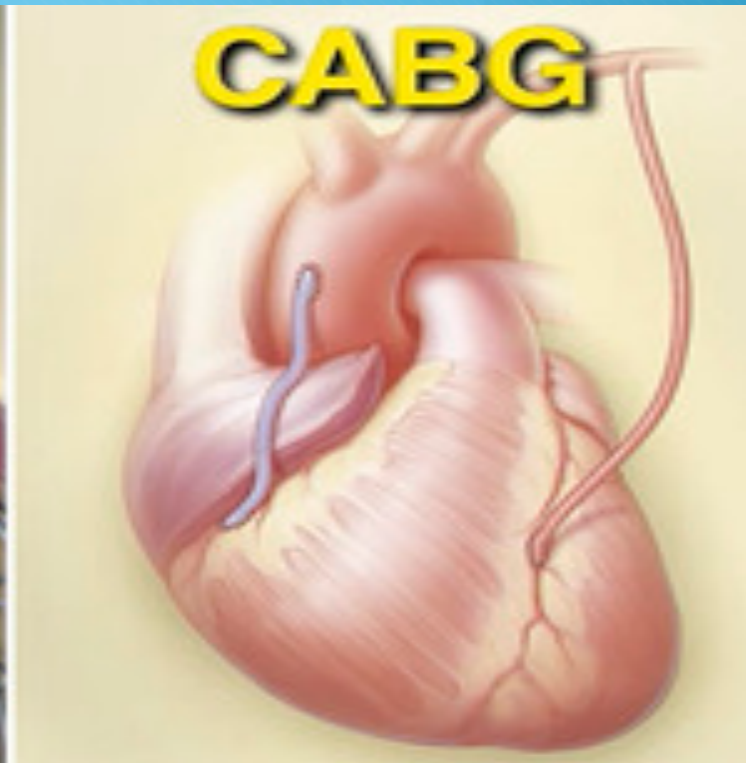
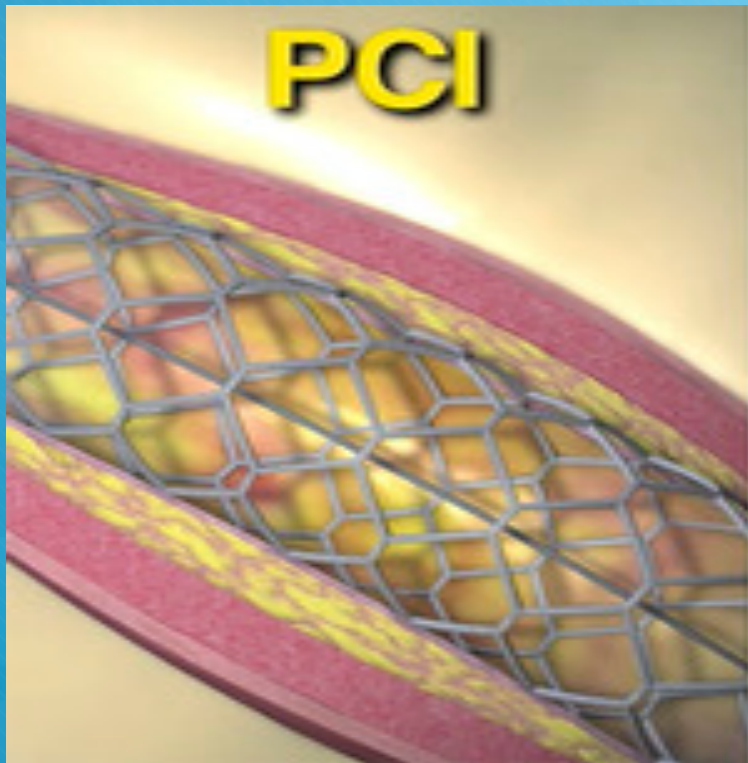
BLOOD PRESSURE CATEGORY	SYSTOLIC mm Hg (upper number)		DIASTOLIC mm Hg (lower number)
NORMAL	LESS THAN 120	and	LESS THAN 80
ELEVATED	120 - 129	and	LESS THAN 80
HIGH BLOOD PRESSURE (HYPERTENSION) STAGE 1	130 - 139	or	80 - 89
HIGH BLOOD PRESSURE (HYPERTENSION) STAGE 2	140 OR HIGHER	or	90 OR HIGHER
HYPERTENSIVE CRISIS (consult your doctor immediately)	HIGHER THAN 180	and/or	HIGHER THAN 120

Exit Slip #7

○ Explain the following procedures...

a.) Angioplasty (Stent insertion)

b.) Bypass Surgery





Warm-Up #8

- Explain OSHA (Occupational & Safety Health Act).



○ Worker and workplace safety. Provides workers an opportunity to work in a safe place, free from hazards.

○

Tracy Hoyle Reflection

Using complete sentences and your best writing, complete a reflection on our guest speaker from yesterday. 5-8 sentences

- What are your overall thoughts/feelings?
- What surprised you?
- What questions do you still have?
- What are some of the things you learned?
- What are your own personal feelings around organ and tissue donations?